

The Apron

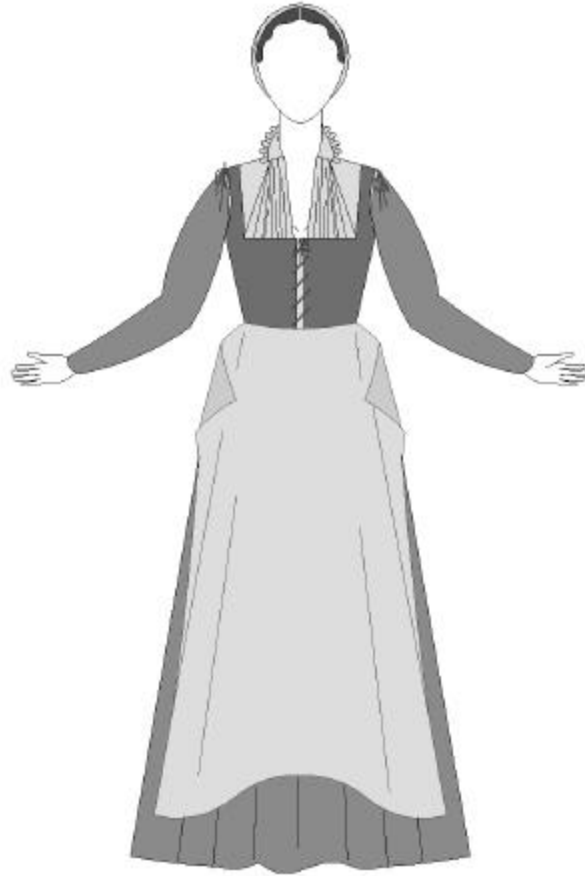
Aprons have been worn to protect clothing since ancient times.

Elizabethan aprons were usually cut as simple rectangles. They could have ties sewn to them, or they may have been held on simply by tucking them into the skirt waistband or bodice lower edge, or they may have been pinned in place.

Our apron has optional ties which are placed in such a way that the corners of the apron hang free, allowing it to drape over the fullness of the skirt.

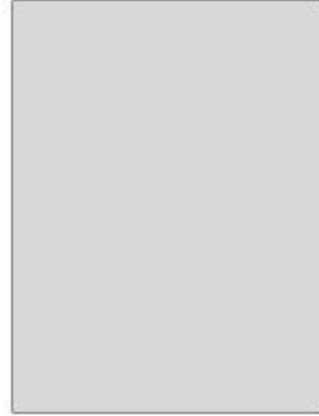
Fabric

The women in the Bermondsey painting are wearing light colored aprons. It is likely that most working women kept darker colored aprons on hand which would not show stains and dirt, but they almost certainly kept white linen aprons on hand for dressier occasions, or to put on when going out. As discussed before, white linen also had the advantage of being easy to launder.

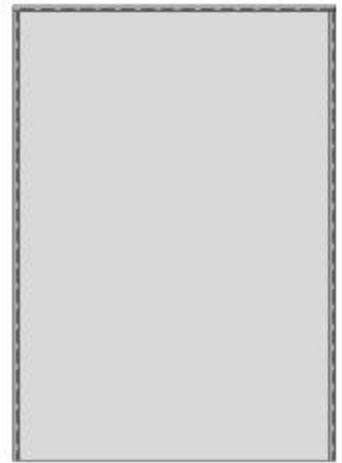


Constructing the Apron

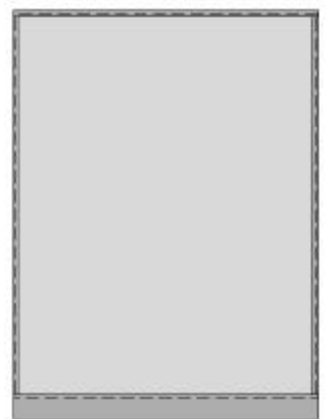
Cut a rectangle of fabric. The upper edge should measure at least $\frac{3}{4}$ of your waist measurement. The length should be 10-12" shorter than your waist to floor measurement.



Press under $\frac{1}{4}$ " on all edges. Press under $\frac{1}{4}$ inch again on upper and side edges. Stitch by hand or machine to form narrow hems.



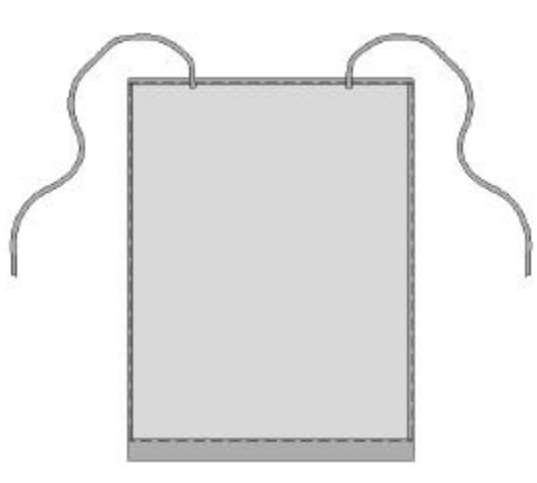
Press lower edge under 2",. Stitch by hand or machine. (This deeper hem helps the apron to hang gracefully)



Ties

Cut two pieces of 1" cotton twill tape, 36" long.

Pin ties to apron, approximately at hipbone points. Try on over skirt and adjust placement if needed. Stitch in place.



The Neckcloth

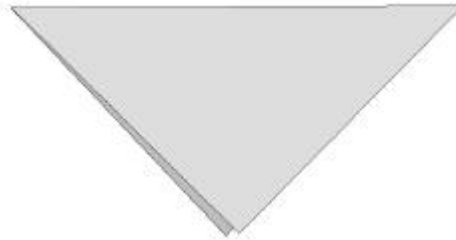
The neckcloth was an alternative to the partlet, as a means of filling in the wide open neck of the bodice. It has been in and out of style many times throughout history, known under such various names as kerchief, tucker, and fichu.

Consisting of a large square of light fabric, it can be draped, folded, tucked and pinned into a wide variety of styles. It can also serve as a carrying cloth, a veil, a towel, and to provide modesty when breastfeeding.



To make a neckcloth, simply cut a large square of white linen. if you are under a size 16, you can cut this square from 45" wide fabric. if you are larger than that, a 60" square will work better. (most linen is sold in 60" width). Narrow hem the edges by hand or machine.

Fold the neckcloth into a triangle.



Place it around your shoulders and wear in one of the following ways, or invent your own.

